

BUDGET

- Waste container, volume: 35 l
- Fits one 35 l or two 17 l bin bags
- Convenient tray cover for bin liner rolls and cleaning utensils
- Can be mounted left or right
- Good value and easy to fit



EURO-FLEXXBio
Art. No. 4920.40

- Fits cabinet widths 55–60 cm
- 1 x 4 l compost container



EURO-FLEXX
Art. No. 4915.40

- Fits cabinet widths 45–60 cm



SINGLE
Art. No. 4910.35

- Fits cabinet widths 40–60 cm



COMPO 35/5
Art. No. 4930.40

- Fits cabinet widths 55–60 cm
- 1 x 5 l compost container

Waste bins are used on average **35 times a day**. That means **12,775 times per year**. This is why we need a system that can meet this daily challenge.

Like our Müllex waste disposal systems. As one of the most intelligent waste separation systems in Switzerland, Müllex offers many benefits. See for yourself.



BYE BYE RUBBISH!

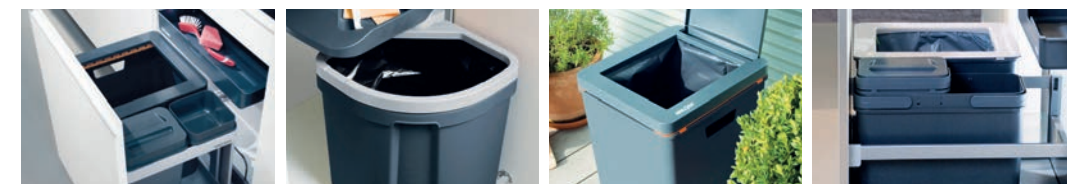
Product Overview

Müllex is a brand of
A. & J. Stöckli AG
Ennetbachstrasse 40
CH-8754 Netstal

Phone +41 (0)55 645 55 55
Fax +41 (0)55 645 54 55
info@muellex.ch
www.müllex.ch



For other models or dimensional drawings visit:
www.müllex.ch



11843

Waste disposal systems with pre-assembled pull-out mechanism

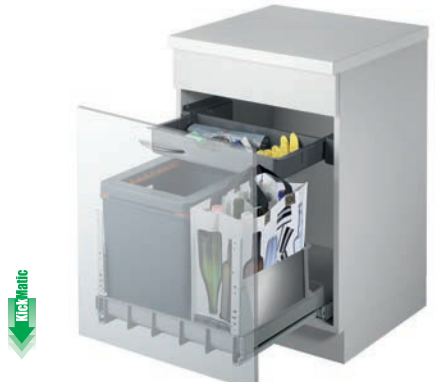
TOP COMFORT

- Spacious container with 41 l capacity – 25% more space
- Patented bag tensioning system holds the bag firmly in place
- Fits one 35 l bin bag, two 17 l bin bags or several smaller bags
- Automatic closing damper
- Pull-out drawer for bin bag roll and cleaning utensils
- Specially designed rail system for waste disposal applications – suitable for up to 100 kg load



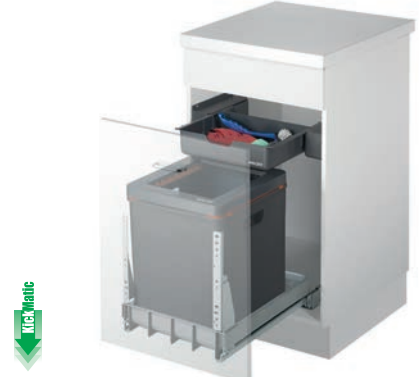
BOXX55/60-R-Bio
Art. No. 5069.01

- Fits cabinet widths 55–60 cm
- 1 x 5 l container for kitchen waste or dishwasher tabs
- 1 x 1.2 l container for sponge and cloths



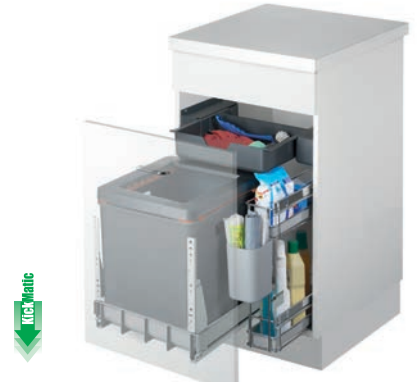
BOXX55/60-R City
Art. No. 5069.11

- Fits cabinet widths 55–60 cm
- 1 x BOXX-BAG for waste collection or shopping use



BOXX40-R
Art. No. 5059.01

- Fits cabinet widths 40–50 cm



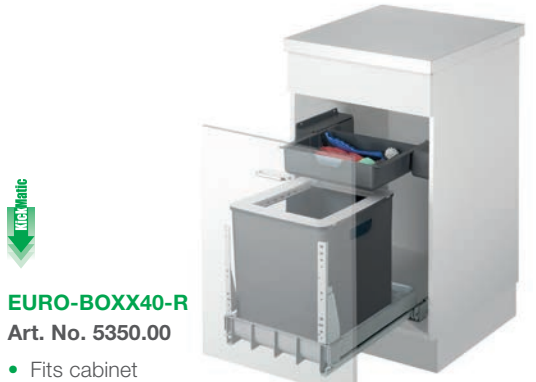
BOXX40-R P
Art. No. 5029.03

- Fits cabinet width 50 cm
- With pull-out drawer for cleaning products



EURO-BOXX55/60-R
Art. No. 5360.00

- Fits cabinet widths 55–60 cm
- 1 x 16 l additional container for plastic, bottles, cleaning utensils etc.
- Optional: 1 x 5 l container with lid for dishwasher tabs or compost, Art. No. 5080.05, suitable for 16 l container



EURO-BOXX40-R
Art. No. 5350.00

- Fits cabinet widths 40–50 cm

Systems for low installation heights

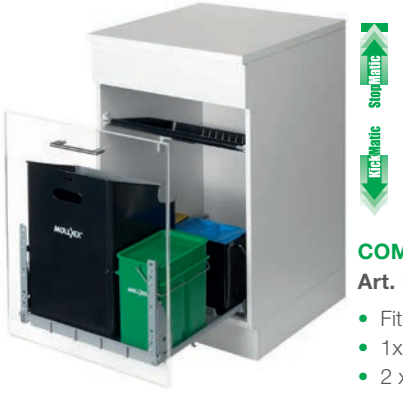
COMFORT

- Waste container with 35 l volume
- Fits one 35 l or two 17 l bin bags
- Up to 3 additional containers for collecting recyclables or with cleaning product drawer
- Convenient tray cover for bin bag rolls and cleaning utensils
- Specially designed rail system for waste disposal systems – suitable for up to 70 kg load



COMFORT 35/17/4/4
Art. No. 4950.52.992

- Fits cabinet widths 55–60 cm
- 1 x 17 l container for plastic, bottles etc.
- 2 x 4 l additional containers for cleaning utensils etc.



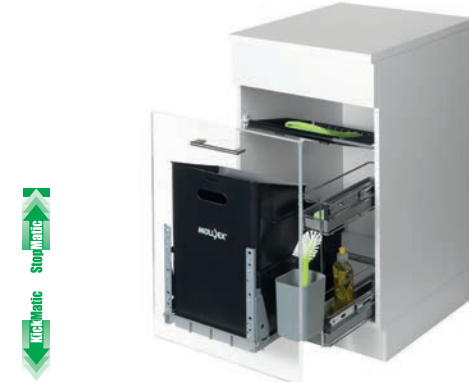
COMFORT 35/5/4/4
Art. No. 4950.40.992

- Fits cabinet widths 55–60 cm
- 1x 5 l compost container
- 2 x 4 l additional containers for cleaning utensils etc.



OEKONOM 35/2/2
Art. No. 4945.39.992

- Fits cabinet widths 40–60 cm
- 2 x 4 l additional containers for cleaning utensils etc.



OEKONOM 35/2/2
Art. No. 4945.50.992

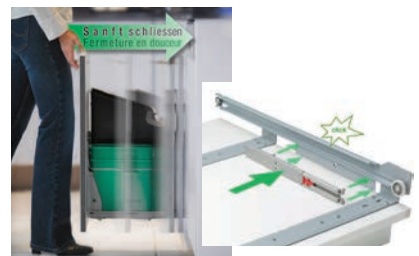
- Fits cabinet widths 50–60 cm
- With pull-out drawer for cleaning products
- 2 x 4 l additional containers for cleaning utensils etc.

ACCESSORIES



KickMatic Art. No. 5019.80

For all Müllex pull-out models. A quick push on the foot pedal and the bucket softly glides out of the floor unit leaving your hands free to get on with other jobs...



StopMatic Art. No. 4619.90

For COMFORT AND OEKONOM pull-out systems. The dampening mechanism slows the drawer down, before it reaches the fully closed position and then retracts it fully.

(with pull-out drawer for cleaning products)